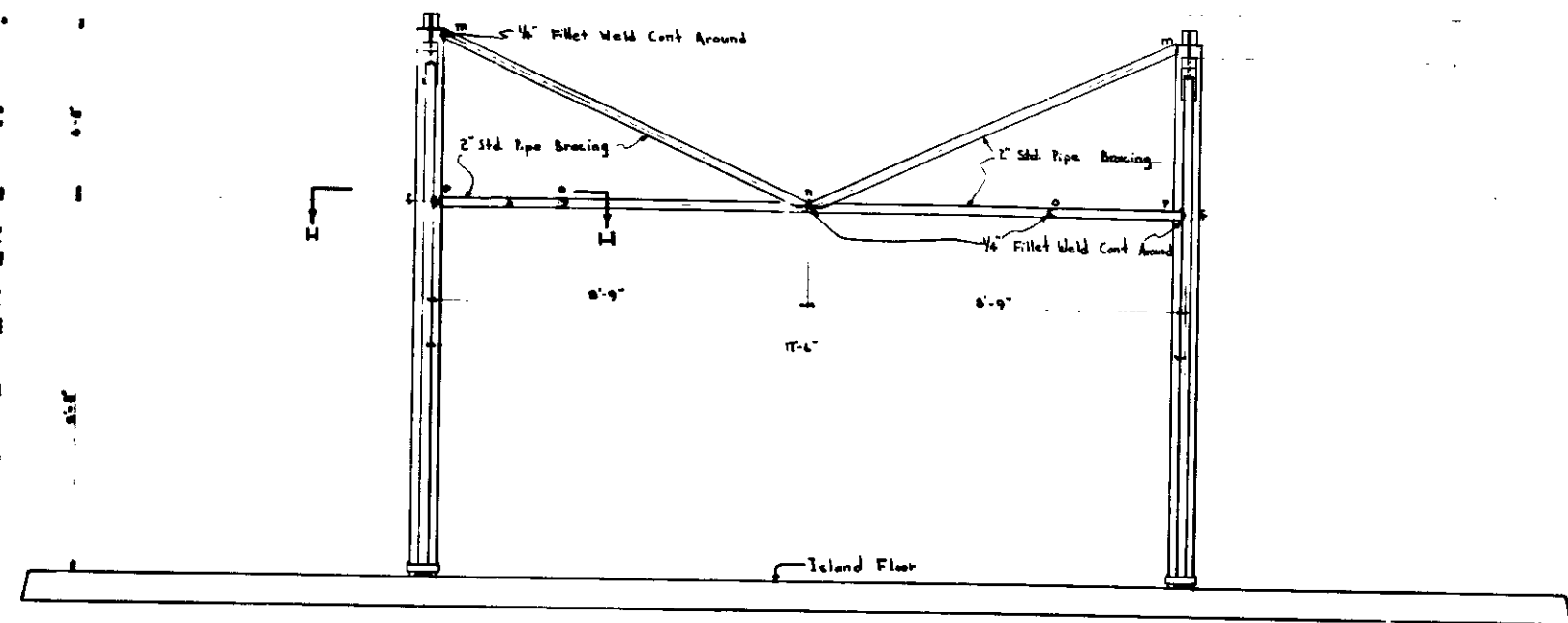
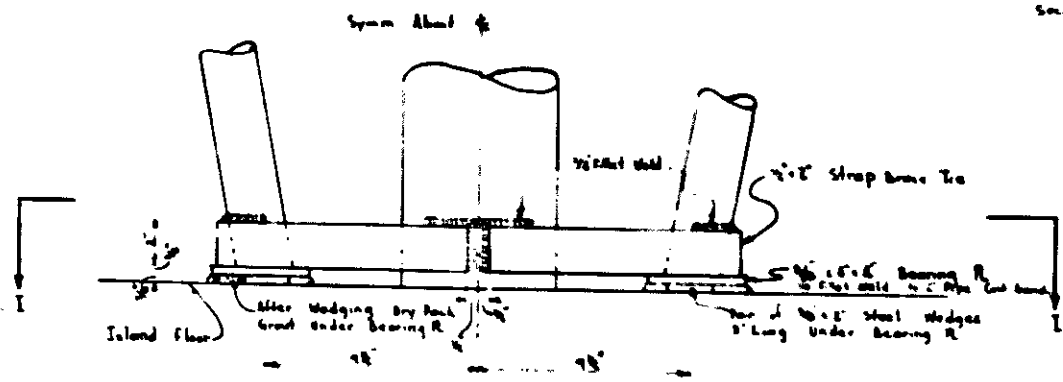


WEST ELEVATION - CANOPY BRACING
Scale 1/2"=1'

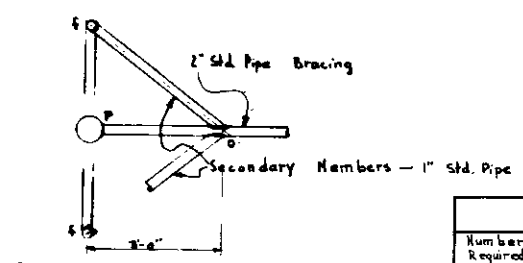


SOUTH ELEVATION - CANOPY BRACING
Scale 1/2"=1'

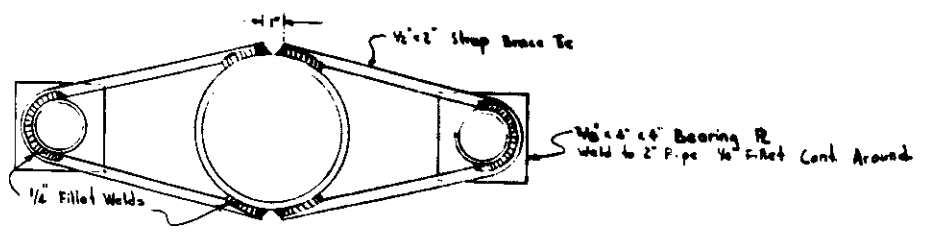
NOTE
New members shall be connected with 1/2" min. Fillet welds cont. around member.
Secondary members shall be connected with 3/16" min. Fillet welds cont. around member.



FLOOR CONNECTION DETAIL WEST EL.
Scale: 3/4"=1'



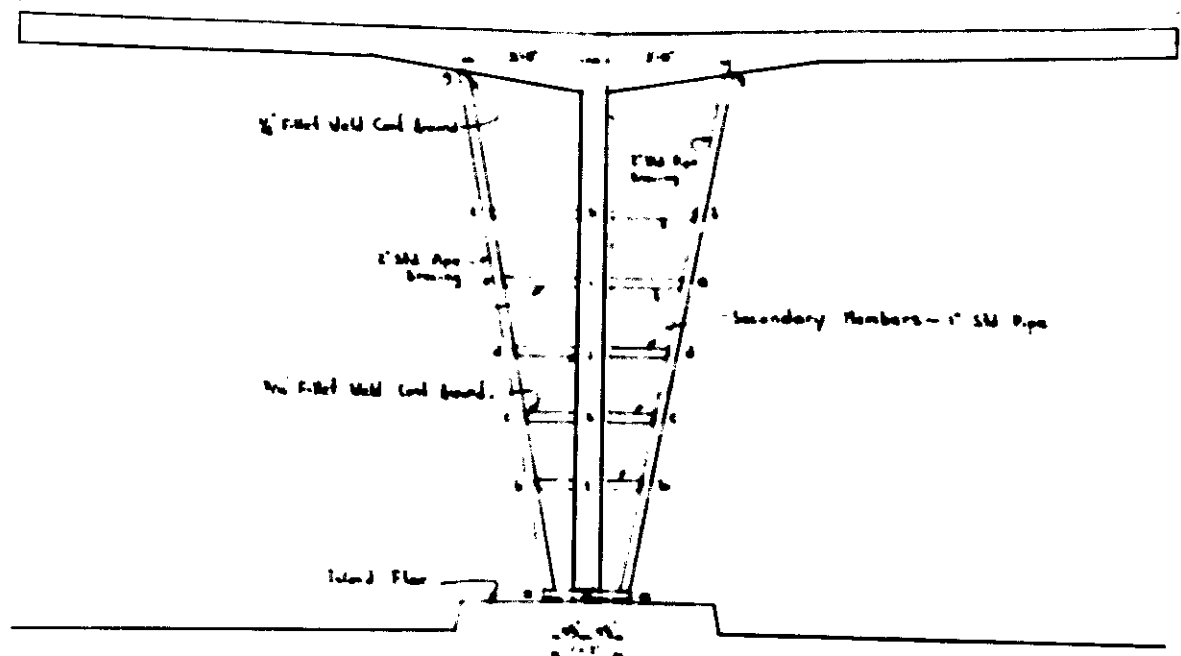
SECTION M-M
Scale 1/2"=1'



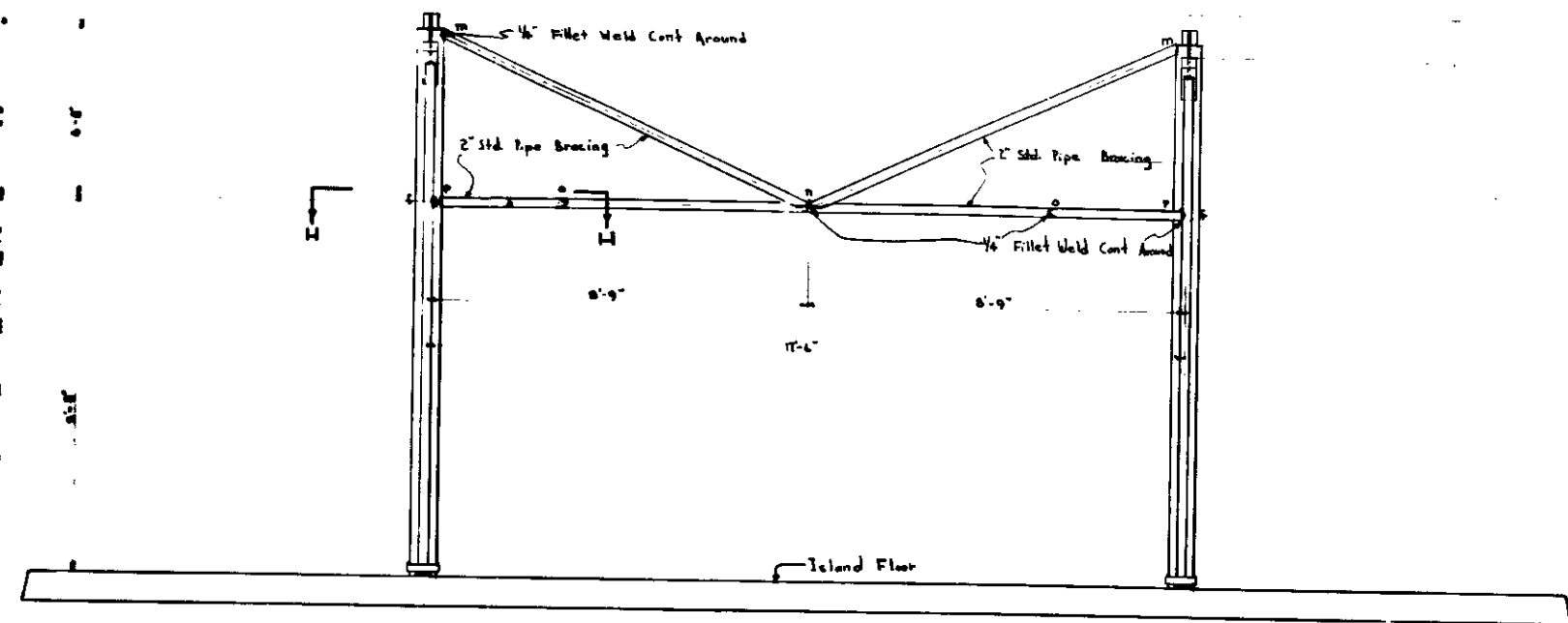
SECTION I-I
Scale 3/4"=1'

Number Required	Description of Item	MATERIAL LIST	
		Where Used	Lin Ft
4 ea.	3/16" x 2" Steel Wedges 3" long	Under Bearing Plates	
4 "	3/16" x 4" x 4" Steel Plate	Bearing Plates	1" 2"
4 "	1/2" x 2" Strap Approx. 2'-2" long	Brace Ties	
4 "	2" Std. Bk. Pipe Approx. 10'-4" long	Members dg	48.5
1 "	" " " " " "	Member p-p	17.0
2 "	" " " " " "	Members mn	18.9
4 "	" " " " " "	" of	
4 ea.	" " " " " "	" sh	15.0
4 "	" " " " " "	" ei	8.3
4 "	" " " " " "	" dj	7.0
4 "	" " " " " "	" ck	6.0
4 "	" " " " " "	" bl	5.0
Tot. Lin. Ft. Pipe =			48.5
			84.2

CANOPY BRACING DETAILS
Service Station at San Bernardino City Yards
2/2/54

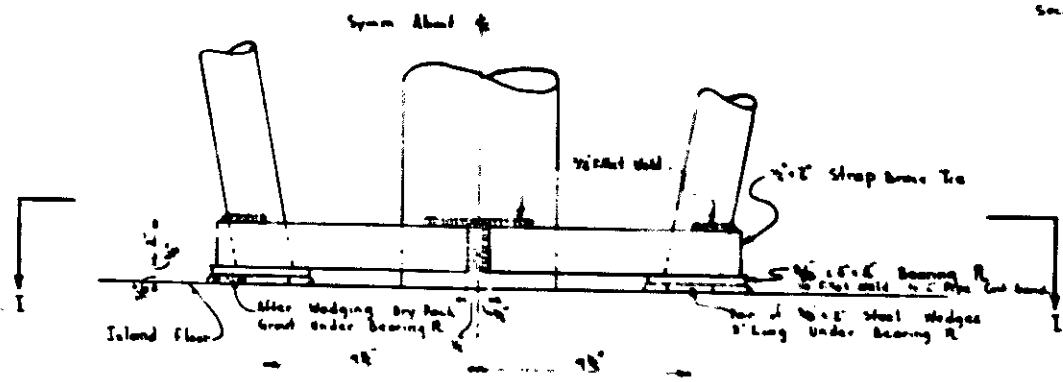


WEST ELEVATION - CANOPY BRACING
Scale 1/2"=1'

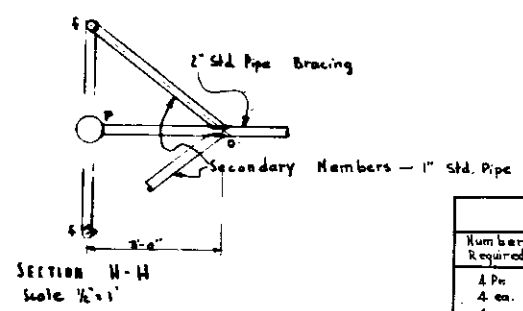


SOUTH ELEVATION - CANOPY BRACING
Scale 1/2"=1'

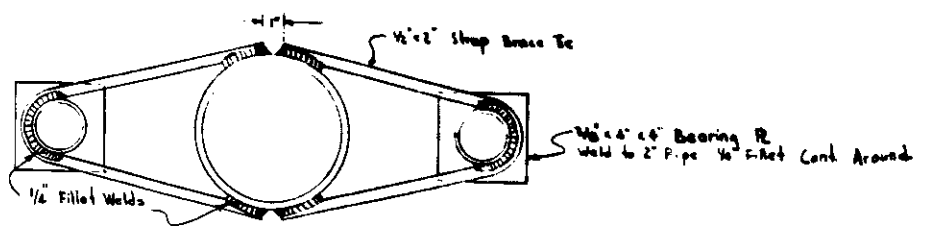
NOTE
 Non members shall be connected with 1/2" min. Fillet welds cont. around member.
 Secondary members shall be connected with 3/16" min. Fillet welds cont. around member.



FLOOR CONNECTION DETAIL WEST EL.
Scale: 3/4"=1'



SECTION M-M
Scale 1/2"=1'



SECTION I-I
Scale 3/4"=1'

Number Required	Description of Item	MATERIAL LIST	
		Where Used	Lin Ft
4 Pa	3/16" x 2" Steel Wedges 3" long	Under Bearing Plates	
4 ea.	3/16" x 4" x 4" Steel Plate	Bearing Plates	1" 2"
4 "	1/2" x 2" Strap Approx. 2'-2" long	Brace Truss	
4 "	2" Std. Bk. Pipe Approx. 10'-4" long	Members 8 g	48.5
1 "	" " " " " " "	Member 11 g	17.0
2 "	" " " " " " "	Members 11 g	
4 "	" " " " " " "	" " of	
4 ea.	" " " " " " "	" " sh	15.0
4 "	" " " " " " "	" " st	8.3
4 "	" " " " " " "	" " dj	7.0
4 "	" " " " " " "	" " ck	6.0
4 "	" " " " " " "	" " bl	5.0
		Total Lin. Ft. Pipe =	48.5 84.2

CANOPY BRACING DETAILS
 Service Station at San Bernardino City Yards
 2/2/54